

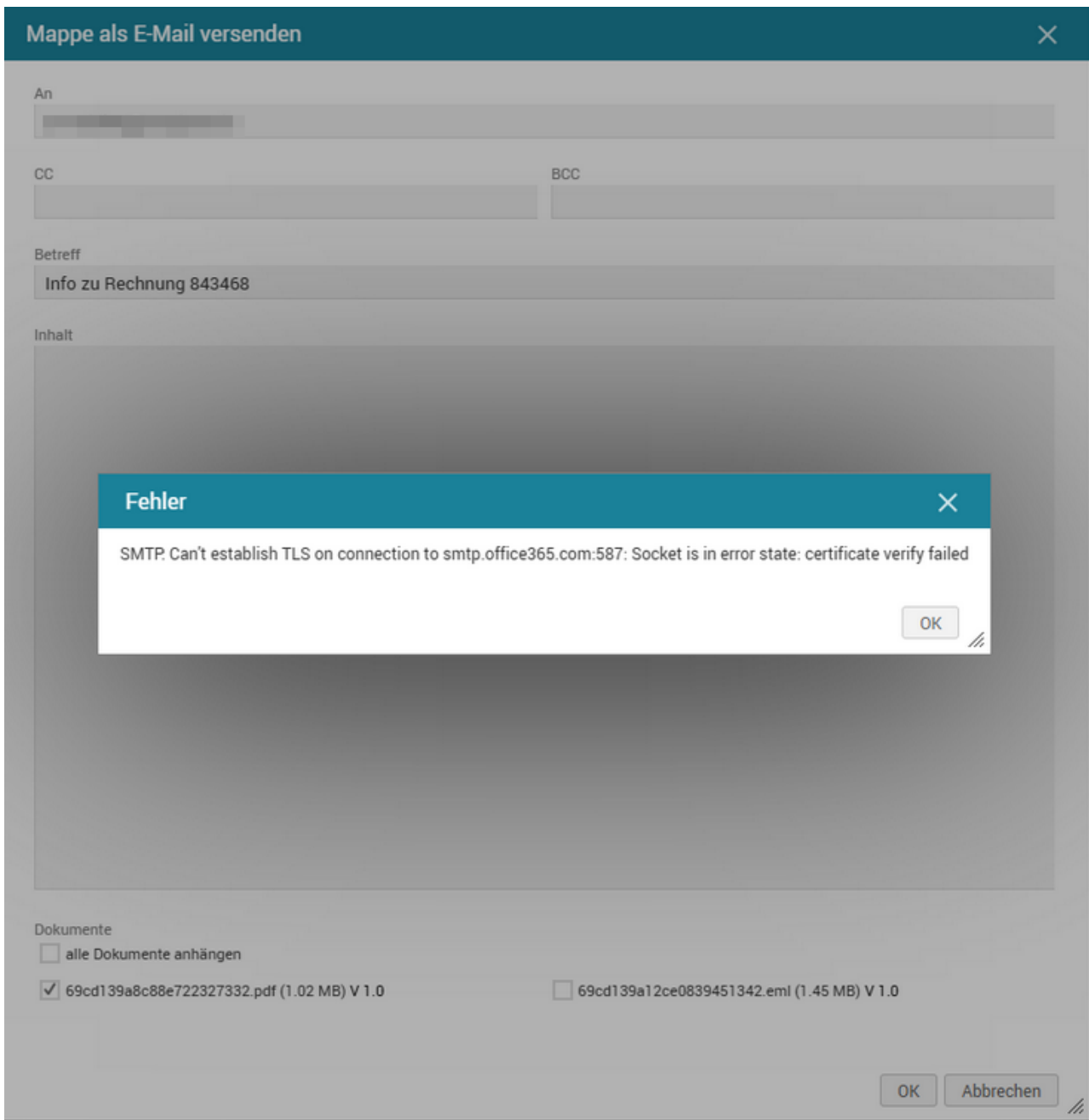
Documents

- [Documents: SMTP Can't establish TLS on connection to smtp.office365.com:587: Socket is in error state: certificate verify failed](#)
- [Documents: Secret abgelaufen](#)

Documents: SMTP Can't establish TLS on connection to smtp.office365.com:587: Socket is in error state: certificate verify failed

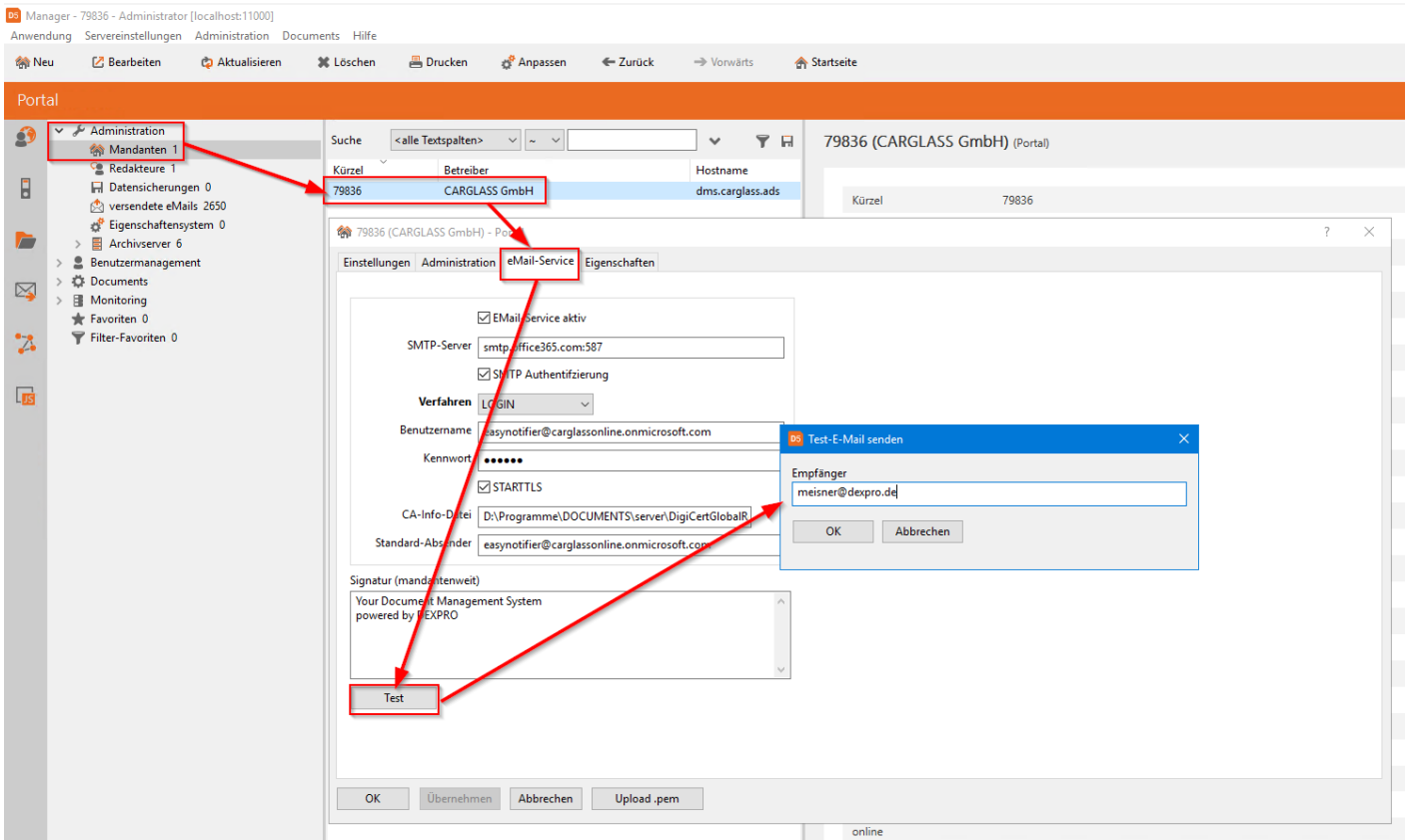
Fehlermeldung

SMTP Can't establish TLS on connection to smtp.office365.com:587: Socket is in error state: certificate verify failed

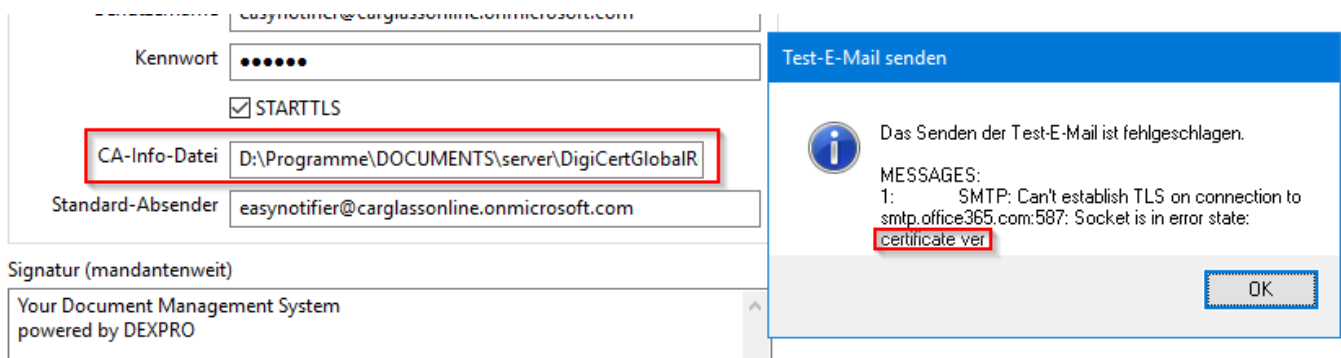


Vorgehen

Der Mailversand kann selber getestet werden:



Das Problem wird sehr wahrscheinlich wieder die CA-Info-Datei sein.
Dasselbe Problem hatten wir schon bei CPC.



Otris hat hier eine Anleitung

<https://otris.software/documents/howto/email/o365-smpt-tls.html#besondereiten-probleme->

Man muss in den OpenSSL-Ordner wechseln und kann dort den Befehl ausführen:

```
openssl s_client -connect smtp.office365.com:587 -starttls smtp
```

```

D:\Programme\DOCUMENTS\DEXPRO\OpenSSL>openssl s_client -connect smtp.office365.com:587 -starttls smtp
CONNECTED(00000194)
depth=1 C = US, O = DigiCert Inc, CN = DigiCert Global G2 TLS RSA SHA256 2020 CA1
verify error:num=20:unable to get local issuer certificate
verify return:1
depth=0 C = US, ST = Washington, L = Redmond, O = Microsoft Corporation, CN = outlook.com
verify return:1
---
Certificate chain
 0 s:C = US, ST = Washington, L = Redmond, O = Microsoft Corporation, CN = outlook.com
  i:C = US, O = DigiCert Inc, CN = DigiCert Global G2 TLS RSA SHA256 2020 CA1
 1 s:C = US, O = DigiCert Inc, CN = DigiCert Global G2 TLS RSA SHA256 2020 CA1
  i:C = US, O = DigiCert Inc, OU = www.digicert.com, CN = DigiCert Global Root G2
---
Server certificate
-----BEGIN CERTIFICATE-----
MIIDdCCB1ygAwIBAgIQBZDL02Vmf0EEqaJpDFt8czANBgkqhkiG9w0BAQsFADBZ
MQswCQYDVQQGEwJVUzEVMBMGA1UEChMMRGlnaUNlcnQgSw5jMTMwMQYDVQQDEypE
aWdpQ2VydCBHbG9iYXNzIGVEXyTIFJTS8TSEEyNTYgMjAyMjEwMjEwMjEwMjEw
MzE4MDAwMDAwMDEwMDEwMDEwMDEwMDEwMDEwMDEwMDEwMDEwMDEwMDEwMDEw
-----

```

C = US,
 O = DigiCert Inc,
 OU = www.digicert.com
 CN = DigiCert Global Root G2

Es muss das passende Zertifikat (PEM) von dieser Seite heruntergeladen werden:

<https://knowledge.digicert.com/general-information/digicert-trusted-root-authority-certificates>

-> Download PEM

The screenshot shows a web browser window with the URL `knowledge.digicert.com/general-information/digicert-trusted-root-authority-certificates`. The page content includes a table with the following information:

DigiCert Global Root G2	Valid un
Download PEM Download DER/CRT	Serial #
	SHA1 F
	SHA256
	Fingerp
	Demo S

CA-Info-Datei `\\DOCUMENTS\server\DigiCertGlobalRootG2.crt.pem`

Die PEM muss ausgetauscht werden.

Damit die liegen gebliebenen Mails versendet werden, muss die Wartungsoperation **mailJob** ausgeführt werden.

Microsoft hat das Zertifikat ausgetauscht.

Alt: "DigiCert Global Root **CA**"

Neu: "DigiCert Global Root **G2**"

Dexpro hat das neue Zertifikat heruntergeladen und am Server hinterlegt.
Die Mailversendung funktioniert jetzt wieder.

Quelle: [Ticket#2015316](#)

Documents: Secret abgelaufen

Gemeint ist folgende Stelle in Documents:

The screenshot shows the Manager interface with the 'Documents' section selected. The 'Eigenschaften' (Properties) pane on the right displays the 'azureConfig' property. The 'Name' column shows 'azureConfig' and the 'Typ' column shows 'oAuth'. The 'Wert' column contains a JSON object with the following structure:

```
{
  "tenants": [
    {
      "tenantId": "5b...",
      "clientId": "x66...",
      "secret": "...",
      "wellKnownOpenid": "https://login.microsoftonline.com/5b.../oauth2/authorize?...",
      "alias": "Azure",
      "userImportConfig": {
        "importGroups": [
          {
            "callbackFile": "azu...",
            "importSubGroups": [
              {
                "defaultLogin": "onf...",
                "azureUserProperties": [
                  {
                    "id": "userPrincipalN...",
                    "azureUserRelations": "azureUserRelations",
                    "updateLogin": false,
                    "defaultAccessProfile": "skipAccessProfiles",
                    "setAccessProfiles": "setAccessProfiles",
                    "defaultDocuments": "defaultSubGroupD...",
                    "defaultSubGroupD": "documentsAccess",
                    "defaultArchiveAcce": "defaultSubGroupA...",
                    "archiveAccess": [
                      {
                        "defaultLicence": "cc...",
                        "defaultSubGroupLi": "licence"
                      }
                    ]
                  }
                ]
              }
            ]
          }
        ]
      },
      "userLoginConfig": {
        "importUserOnLogin": true,
        "updateUserOnLogin": true
      }
    }
  ],
  "accessProfileImportConfig": [

```